



www.theZboards.com

Thank you for your purchase of our new innovative product. We believe that these boards will give you a whole new dimension to your fishing experience. Z Boards are much lighter than any other planer board on the market. With the extraordinary finish, the board glides through the water. These boards can be equipped with multiple presentations, (I.E. from a flat line to heavy lead core). A small adjustment on the arm will allow each board to run your presentation in line. The wood makes these boards extremely buoyant and easy to reel in. With the push pin release technology, you don't have to ever fight the board.

INSTRUCTIONS

• **How do I attach the board to my line?**

First let out the desired amount of line, second, attach your line to the OR-16 release (rear release) making sure your line is behind the center pin of the release. Lastly, attach your line to the push pin tension release leaving some slack between the releases. Your line will pop out of the tension release with a small tug on your line, disengaging your board.

• **How far do I let my board out?**

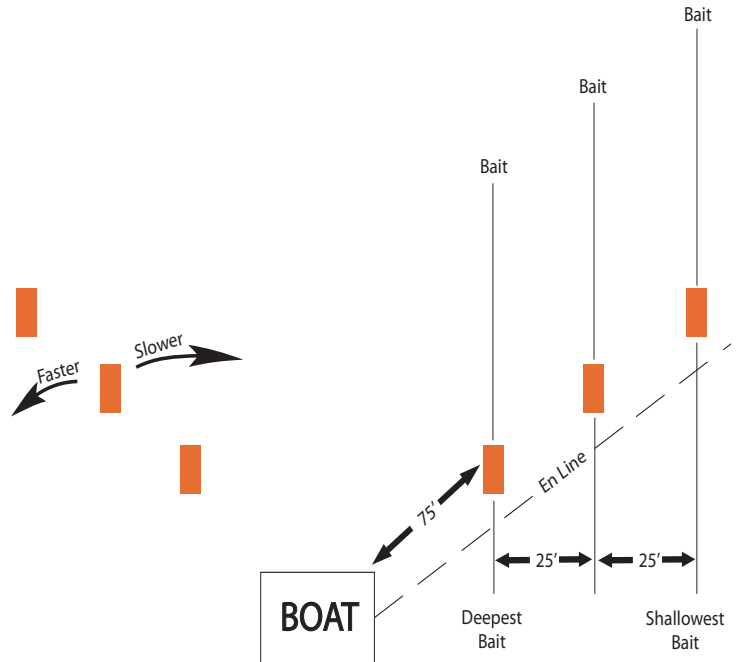
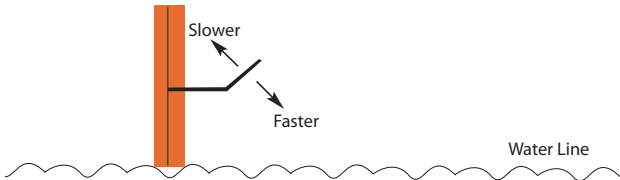
An ideal distance to start at, once you set the board is 125 feet of line for the first board, 100 feet of line for the second, and 75 feet of line for the third.

• **How do I adjust my board that is tracking slow?**

Take the board as it was running in the water. Bend the adjustable arm down towards the waterline. Never adjusting more than 1/2 inch at a time. Over adjusting will cause your board to dive on occasion.

• **How do I adjust my board that is tracking fast?**

Take the board as it was running in the water. Then bend the adjustable arm up. Away from the water line. Never adjusting more than 1/2 inch at a time.



Assembly Instructions

1. Open package and remove all pieces and make sure all parts are there.
2. Screw the back eyelet(E) into the back of board. (There is a hole to screw it into)
3. Put small split ring(C) to the back eyelet(E).
4. Put the OR-16 release(B) to the small split ring(C).
5. Put the big split ring(D) onto the top loop in the wire arm of the board.
6. Put the push pin release(A) on the big split ring(D).

